



# FLOWERPOT VP3

BY VERNER PANTON  
1969

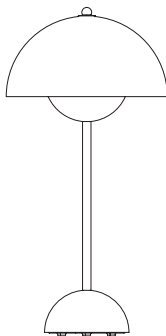


# FLOWERPOT VP3

BY VERNER PANTÓN  
1969

The Flowerpot lamps became synonymous with the Flower Power movement from the late 60s. Reflecting a break from convention to embrace a more open, modern mentality that promoted peace and harmony. Such was the mindset of the designer, Verner Pantón. One of the most forward-thinking talents of his time. The lamp's simple design consisting of two semi-circle spheres facing each other is not only an icon of that era, the Flowerpot lamps remain equally as appealing to new generations. Especially in the new series of colours launched by &tradition.

Captivated by fluid forms and a vast spectrum of vivid colours, Pantón designed this lamp to be more than a source of illumination. He went on to create entire interiors filled with furniture, saturated with psychedelic colours and accentuated with lamps appearing in repeated patterns as decorative details. From futuristic furniture fairs to exhibition spaces to museums of contemporary design, galleries and private collections, the Flowerpots continue to signify a singular form ula for beauty and simplicity.



H: 50cm / 19.7in

Ø: 23cm / 9.1in

<b>Category</b>	Table lamp
<b>Production process</b>	The two shades are made from deep drawn metal.
<b>Environment</b>	Indoor
<b>Materials</b>	Lacquered steel with 2 meter clear PVC cord
<b>Dimensions (cm/in)</b>	Ø: 23cm/9.1in, H: 50cm/19.7in
<b>Weight (kg)</b>	4.5 kg
<b>Colours</b>	Dark green, Mustard, Beige red, Deep red, Black blue, Grey beige, White, Matt black, Matt white, Matt light grey, Polished stainless steel, Polished brass
<b>Voltage (V)</b>	220-240V - 50Hz
<b>Light source &amp; energi efficiency class</b>	E27 Max 40 Watt. The luminaire is compatible with bulbs of the energy classes: A++ - E. Bulb is not included.
<b>Certifications</b>	CE, IP20, Class II
<b>Cord lenght (cm/in)</b>	200cm/78.7in
<b>Cleaning Instructions</b>	Clean with soft dry cloth. Always switch off the electricity supply before cleaning.
<b>Package dimensions (cm/in)</b>	H: 45.0cm/17.7in, W: 29.0cm/11.4in, D: 26.0cm/10.2in

PRODUCT



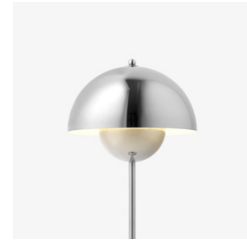
COLOUR



Dark green



Grey beige



Polished stainless steel



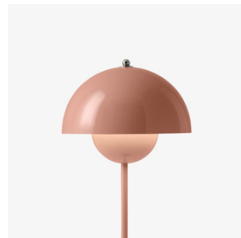
Mustard



White



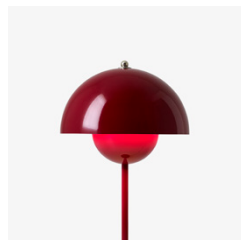
Polished brass



Beige red



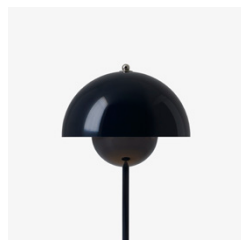
Matt black



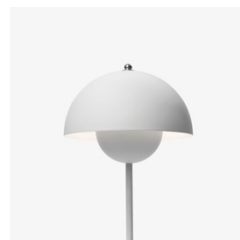
Deep red



Matt white



Black blue



Matt light grey