



# IN BETWEEN CHAIR SK1

BY SAMI KALLIO  
2013/14

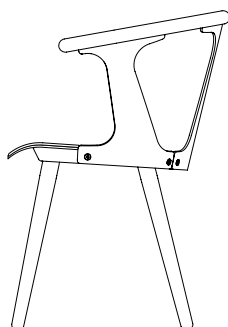


# IN BETWEEN CHAIR SK1

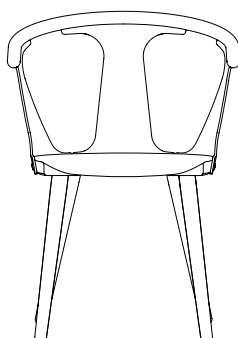
BY SAMI KALLIO  
2013/14

The interplay between positive and negative space is central to In Between, Sami Kallio's chair design for &tradition. Its back and side panels provide a concrete shape and support, but forms are created equally by the gaps in between them. Kallio's expertise in traditional woodworking craftsmanship is evident in the chair. In Between is produced using two classical techniques; compression molding (making it light and thin, yet strong) and woodturning (a technique that uses a lathe to achieve greater detail).

Sami Kallio, with his solid grounding in the traditional woodworking techniques of Scandinavia and his eye for ingenious detail, has proven to be the ideal candidate to design the first wooden chair in &tradition's stable. The upholstered seat is the perfect addition to the wooden chair: it embraces modern lifestyles and long, cosy dinners around the dining table, without compromising the chair's light and elegant expression.



D: 54cm / 21.2in



W: 58cm / 22.8in

H: 77cm / 30.3in

<b>Product type</b>	Chair with armrest.
<b>Production Process</b>	The legs and the armrest are turned from solid oak or ash and the seat and side panels are formpressed from oak or ash veneer.
<b>Environment</b>	Indoor.
<b>Dimensions ( cm / in )</b>	H: 77cm/30.3in, W: 58cm/22.8in, D: 54cm/21.2in. Armrest height: 70cm/27.6in. Seating height: 45cm/17.7in.
<b>Weight ( kg )</b>	7.00 kg.
<b>Materials</b>	Solid wood and formpressed veneer. The chair also comes with a full upholstered seat.
<b>Colours</b>	White oiled oak. Smoked oiled oak. Black stained ash (RAL 9005).
<b>Strength, Durability and Safety Testing Certifications</b>	The In Between chair - SK1 is tested for strength, durability and safety according to EN 15373 Level 2 - General contract use.
<b>Cord lenght / diameter ( cm / in )</b>	400cm/157.5in.
<b>Cleaning Instructions</b>	Please download our Material Cleaning Instructions through <a href="http://www.andtradition.com">www.andtradition.com</a>
<b>Package Dimensions (cm / in)</b>	H: 95.0cm/37.4in x W: 72.0cm/28.3in x D: 60.0 cm/23.6in.



# IN BETWEEN SK2

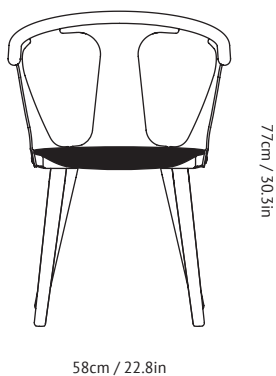
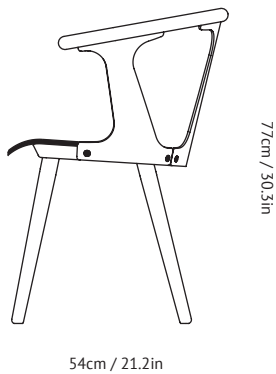
BY SAMI KALLIO  
2013/14



# IN BETWEEN SK2

BY SAMI KALLIO  
2013/14

The interplay between positive and negative space is central to In Between, Sami Kallio's chair design for &tradition. Its back and side panels provide a concrete shape and support, but forms are created equally by the gaps in-between them. Kallio's expertise in traditional woodworking craftsmanship is evident in the chair. In Between is produced using two classical techniques; compression molding (making it light and thin, yet strong) and woodturning (a technique that uses a lathe to achieve greater detail). Sami Kallio, with his solid grounding in the traditional woodworking techniques of Scandinavia and his eye for ingenious detail, has proven to be the upholstered seat is the perfect addition to the wooden chair: it embraces modern lifestyles and long, cosy dinners around the dining table, without compromising the chair's light and elegant expression.



<b>Product category</b>	Chair with armrest
<b>Production Process</b>	The legs and the armrest are turned from solid oak or ask and the seat and side panels are formpressed from oak or ash veneer.
<b>Environment</b>	Indoor
<b>Material</b>	Solid wood, formpressed veneer, CMHR foam, fabric or leather upholstery.
<b>Dimensions (cm/in)</b>	H: 77cm/30.3in, W: 58cm/22.8in, D: 54cm/21.2in. Armrest height: 70cm/27.6in. Seating height: 45cm/17.7in.
<b>Weight (kg)</b>	7kg
<b>Wood finishes</b>	White oiled oak Smoked oiled oak Black stained ash (RAL 9005)
<b>Standard upholstery options</b>	White oiled oak with Fiord 251. White oiled oak with Cognac Silk leather. Smoked oiled oak with Fiord 171. Smoked oiled oak with Black Silk leather. Black stained ash with Fiord 191. Black stained ash with Black Silk aniline leather. Other fabrics or leathers available for projects upon request.
<b>COM - Material Consumption</b>	Fabric and leather usage; 60x60cm for one seat. COM must be approved by &tradition to ensure suitability for upholstery on the chair.
<b>Strength, Durability and Safety Testing</b>	The In Between Barstool is tested for strength, durability and safety according to EN 16139 Level 1 - General contract use.
<b>Cleaning Instructions</b>	Please download our Material Cleaning Instructions through <a href="http://www.andtradition.com">www.andtradition.com</a>
<b>Package Dimensions (cm/in)</b>	H: 80cm/31.5in, W: 56cm/22in, D: 59cm/23.2in.

**PRODUCT**

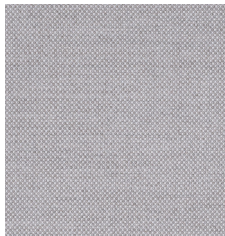


**FRAME**

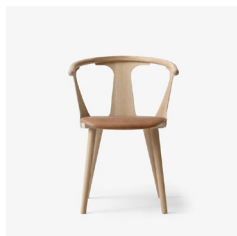


**White oiled oak**

**FABRIC**



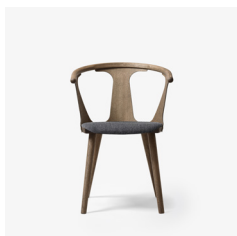
Fiord 251



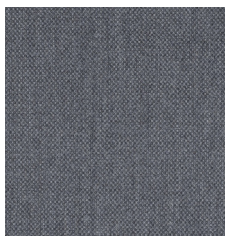
**White oiled oak**



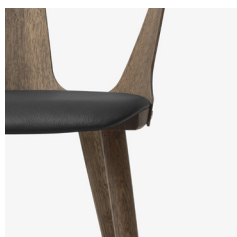
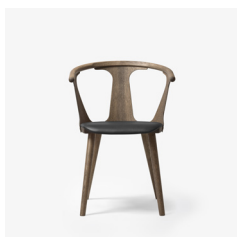
Cognac silk leather



**Smoked oiled oak**



Fiord 171



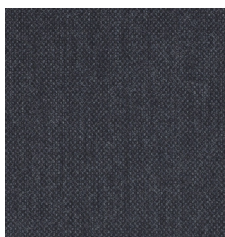
**Smoked oiled oak**



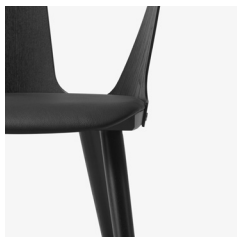
Black silk aniline leather



**Black stained ash**



Fiord 191



**Black stained ash**



Black silk aniline leather