

deadgood | Hug Chair | Deadgood Studio

'Hug Chair' utilises Lloyd Loom, a traditional yet somewhat forgotten twentieth century material, manipulated over a plywood shell and sat atop a recycled steel frame. The range includes dining and lounge chairs and is also available in Oak and Upholstered finishes.



Above
Right

Hug Chair in Lloyd Loom (Natural) & RAL 9005 (Jet Black).
Detail of Lloyd Loom (Natural).



deadgood | Hug Chair | Deadgood Studio



Materials	Moulded birch ply shell, powdercoated steel frame, foams & fabrics or kraft paper & aluminium wire on non-show wood options (Lloyd Loom option available in 2019).
Additional Notes	Stackable in quantities of 4.
Place of Origin	Peterborough & Birmingham, United Kingdom. Lohr am Main, Germany.
Shipping	6-8 weeks. Lead time for large orders timed on request. Free UK Kerbside delivery on orders over £1000. Anything below please add £45. White glove and full installation service available (Price on request).



HG
555mm (w) x
520mm (d) x
760mm (h)
450mm seat height



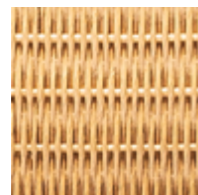
FRAME
Jet Black
RAL 9005



FRAME
Bespoke RAL



SEAT
Oak



SEAT
Lloyd Loom Natural
AVAILABLE 2019



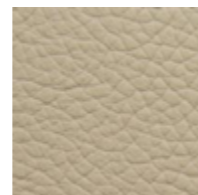
SEAT
Bespoke RAL
Lloyd Loom
AVAILABLE 2019



UPHOLSTERY
All Fabric Bands



UPHOLSTERY
COM



UPHOLSTERY
Leather 1 & 2



Hug Chair in Oak veneer & Febrik Uniform Mélange (Smoke), both with frames in RAL 9005 (Jet Black).



Detail of Hug Chair in Lloyd Loom (Natural) with frame in RAL 9005 (Jet Black).