

The 'Scafell Sofa', designed in house by the Deadgood Studio, is a simple modular sofa system with a comfortable and generously proportioned seat, a playful colourway and a subtle smiling stitch detail.

Featuring seating bases in three sizes and available with optional arms and two heights of back rest, this versatile product can be specified in twelve configurations, either side by side in a traditional linear format or back to back to create a stunning island unit.

The mixed sizes of seat width and backrest height reference the boulder field at the top of England's most majestic and highest summit.



Above

Scafell SS1BL in Kvadrat Remix 2 (173), SS2A in Kvadrat Remix 2 (123) & SS3A in Kvadrat Remix 2 (612) with legs in RAL 3012 (Beige Red).



Materials Softwood frame, aluminium legs, CMHR foams and fabrics.

Additional Notes Crib 5 fabrics available (Price on request).
Available in leather, COM and COL (Price on request).

Place of Origin Thetford, United Kingdom.

Shipping 6-8 weeks.
Lead time for large orders timed on request.
Free UK Kerbside delivery on orders over £1000. Anything below please add £45.
White glove and full installation service available (Price on request).



SS1
1,080mm (w) x
840mm (d) x
400mm (h)



SS1A
1,080mm (w) x
840mm (d) x
800mm (h)
400mm seat height



SS1B
1,080mm (w) x
840mm (d) x
640mm (h)
400mm seat height



SS1A L / R
1,150mm (w) x
840mm (d) x
800mm (h)
400mm seat height



SS1B L / R
1,150mm (w) x
840mm (d) x
640mm (h)
400mm seat height



SS2
870mm (w) x
840mm (d) x
400mm (h)



SS2A
870mm (w) x
840mm (d) x
800mm (h)
400mm seat height



SS2B
870mm (w) x
840mm (d) x
640mm (h)
400mm seat height



SS3
1,080mm (w) x
1,410mm (d) x
400mm (h)



SS3A
1,080mm (w) x
1,410mm (d) x
800mm (h)
400mm seat height



SS3B
1,080mm (w) x
1,410mm (d) x
640mm (h)
400mm seat height



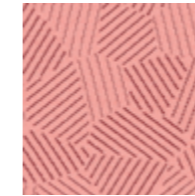
SS3A L / R
1,150mm (w) x
1,410mm (d) x
800mm (h)
400mm seat height



SS3B L / R
1,150mm (w) x
1,410mm (d) x
640mm (h)
400mm seat height



UPHOLSTERY
All Fabric Bands



UPHOLSTERY
COM



UPHOLSTERY
Leather 1 & 2



LEG
Bespoke RAL



LEG
Brushed Aluminium



Safell Modular in Kvadrat Remix 2 (612) with legs in RAL 3012 (Beige Red).



Safell Modular in Kvadrat Remix 2 (612) with legs in RAL 3012 (Beige Red); & Safell Modular in Camira Oxygen (BA055).



Safell Modular in Kvadrat Remix 2 (173, 933 & 982) with legs in RAL 9005 (Jet Black).



Safell Modular in Kvadrat Remix 2 (612) with legs in RAL 3012 (Beige Red) at Breather, Clerkenwell.