

The Working Girl Collection's aesthetic combines simple utilitarian styling with a robust material choice and considered detailing to create an inherently functional range of products. Each item in the seating range stacks vertically and boasts handy apertures that enhance portability. Our Stools and Chairs also feature a small footprint for those projects where space is at a premium.

The Working Girl Soft features a powder coated or raw steel frame and a soft upholstered seat, available in a selection of fabrics.



Above

Working Girl Soft Stool in RAL 9005 (Jet Black) & Kvadrat Steelcut Trio 3 (246);
Working Girl Soft Cross Stool in Raw & Kvadrat Steelcut Trio 3 (246).

Right

Working Girl Medium Soft Cross Stool in RAL 3022 (Dark Salmon Red) & Kvadrat Canvas 2 (984).





Materials Softwood seat, CMHR foams and fabrics and steel frame.

Additional Notes Stackable in quantities of 10.

Place of Origin Birmingham & Aldershot, United Kingdom.

Shipping 6-8 weeks.

Free UK Kerbside delivery on orders over £1000. Anything below please add £45.
White glove and full installation service available (Price on request).



WG1S
435mm (w) x
355mm (d) x
490mm (h)



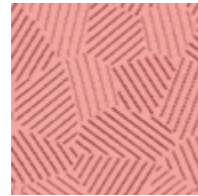
WG1M
465mm (w) x
435mm (d) x
675mm (h)



WG1L
495mm (w) x
490mm (d) x
825mm (h)



UPHOLSTERY
All Fabric Bands



UPHOLSTERY
COM



UPHOLSTERY
Leather 1 & 2



FRAME
Jet Black
RAL 9005



FRAME
Signal White
RAL 9003



FRAME
Raw
(Clear Lacquered)



FRAME
Bespoke RAL



Working Girl Soft Stool in RAL 9003 (Signal White) & Bute Lewis (Munro) at Breather, Clerkenwell.
(Photo: Bunpa-Henri Tan)



Materials	Solid oak with steel frame.
Additional Notes	Stackable in quantities of 4. Bespoke etching available (Price on request).
Place of Origin	Birmingham, United Kingdom. Ljubljana, Slovenia.
Shipping	6-8 weeks. Lead time for large orders timed on request. Free UK Kerbside delivery on orders over £1000. Anything below please add £45. White glove and full installation service available (Price on request).



WG1MC
465mm (w) x
435mm (d) x
865mm (h)
675mm seat height



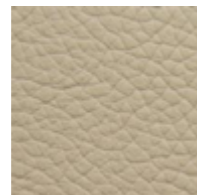
WG1LC
495mm (w) x
490mm (d) x
1,015mm (h)
825mm seat height



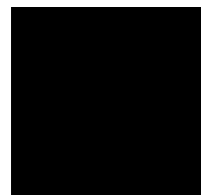
UPHOLSTERY
All Fabric Bands



UPHOLSTERY
COM



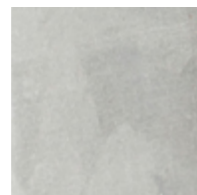
UPHOLSTERY
Leather 1 & 2



FRAME
Jet Black
RAL 9005



FRAME
Signal White
RAL 9003



FRAME
Raw
(Clear Lacquered)



FRAME
Bespoke RAL



Working Girl Medium Soft Cross Stool in RAL 3022 (Dark Salmon Red) & Kvadrat Canvas 2 (984).



Materials Softwood seat, CMHR foams and fabrics with steel frame.

Additional Notes Stackable in quantities of 7.

Place of Origin Birmingham & Aldershot, United Kingdom.

Shipping 6-8 weeks.
Free UK Kerbside delivery on orders over £1000. Anything below please add £45.
White glove and full installation service available (Price on request).



WG4

495mm (w) x
475mm (d) x
820mm (h)
490mm seat height



WG4A

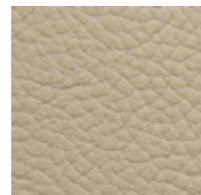
600mm (w) x
475mm (d) x
820mm (h)
490mm seat height



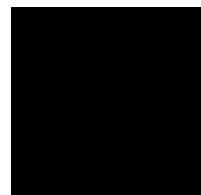
UPHOLSTERY
All Fabric Bands



UPHOLSTERY
COM



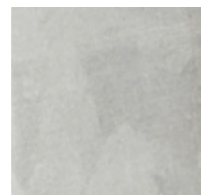
UPHOLSTERY
Leather 1 & 2



FRAME
Jet Black
RAL 9005



FRAME
Signal White
RAL 9003



FRAME
Raw
(Clear Lacquered)



FRAME
Bespoke RAL



Working Girl Soft Chair in RAL 9005 (Jet Black) & Bute Lewis (Munro) at Breather, Clerkenwell.
(Photo: Bunpa-Henri Tan)



Working Girl Soft Armchair in RAL 9003 (Signal White) & Febrik Razzle Dazzle (Natural).