



Strong Table

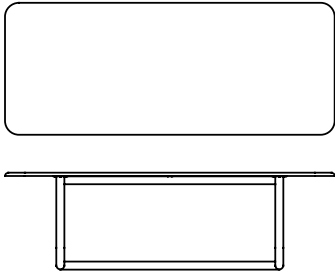
Eugenio Quattrone

The clean, consistent design of Eugenio Quattrone adopts and characterises the curved steel tube which becomes the structural core of Strong collection.



Available models

Structure in tubular curved steel Ø 60mm, top lacquered or in MDF covered with manual trowel.



Strong Table

hight 74 cm

measure

200 x 100 cm

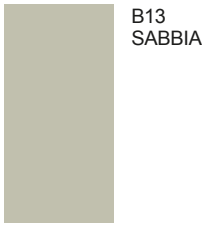
250 x 100 cm

300 x 109 cm

Finishing

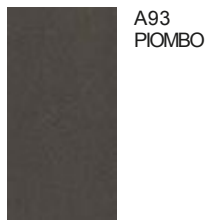
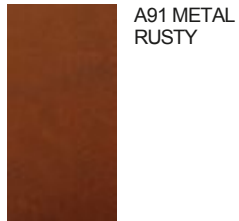
Structure

Lacquers



Top

Handcraft finishes



Wood



Lacquers



B13
SABBIA



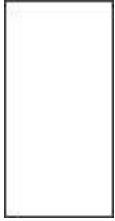
B22
MARRONE
BUNGEE



B42
GRAFITE



B59 NERO
OPACO



B62
BIANCO
OPACO



B82 GRIGIO



B84 GRIGIO
UMBRO