

Designed by Greta Grossman

PRODUCT



COLORS



// Black



// White

DESCRIPTION

The G10 lamp collection, designed by the icon Greta M. Grossman in 1950, is another of her undiscovered designs. The lamp collection is characterized by its distinctive lampshade, giving the space a pleasant light, as well as its rough surface and contrasting polished brass details, which are all defining the lamp's unique look. The collection, consisting of a floor lamp and a pendant, has a refined luxurious charm combined with an industrial character, which gives an expression of being a classic yet contemporary design.

The G10 lamp collection was produced, as many of Grossman's other work, in both America and her native Sweden, where this collection draw its features after the Swedish version. The lamp was Greta M. Grossman's 10th product for the Swedish manufacturer Bergboms, therefore the name G10.

VERSION - GRÄSHOPPA PENDANT

Colour codes are indicative.

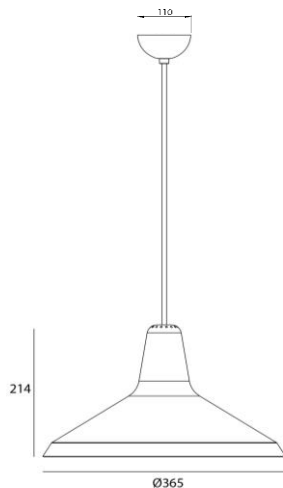
- Fabric wire - Black:
- Black / White inside // RAL 9005 / RAL 9003 // Structure lacquer / Gloss level 10
- Fabric wire - White:
- White / White inside // RAL 9010 / RAL 9003 // Structure lacquer / Gloss level 10
- Canopy - Brass

VERSION

Order item - look for part number in the pricelist.

Series contains the following:

- G10 Floor Lamp**
- Gräshoppa Floor Lamp**
- Gräshoppa Task Table Lamp**
- Gräshoppa Pendant Lamp**
- Cobra Wall Lamp**
- Cobra Table Lamp**
- Cobra Floor Lamp**



FACTS

MATERIAL

Shade: Coated aluminum
Canopy: Brass
Glass shade: Satinized opal glass

MEASUREMENT - L x W x H

Lamp height: 8,3 inches
Lamp stand: 14,8 x 17,1 inches
Canopy diameter: dia 4,3 inches
Canopy length: 2,5 inches
Shade height: 8,3 inches
Shade diameter: dia. 14,4 inches
Cable length, exposed: 157,5 inches

WEIGHT ITEM - LAMP INCL. WIRE

6,9 lb

PACKAGING TYPE

Cardboard box

PACKAGING MEASUREMENT - L x W x H inches

L: 16,3 x W: 16,3 x H: 11,8 inches

WEIGHT PACKAGING - MATERIAL TYPE (recyclable)

- LD-EPE foam: 8,7 oz
- PE polybag: 1,5 oz
- Cardboard outside, 5ply Corrugated: 26,6 oz

WEIGHT INCL. PACKAGING - TOTAL

5,2 lb

NUMBER OF PARCELS

1 pcs.

ACCESSORIES

-

ENVIRONMENT

-

TESTS

-

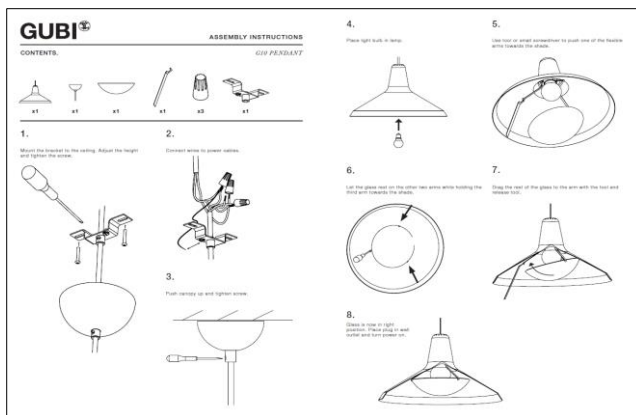
CERTIFICATION AND LABELS

CUL-CERTIFIED

SAFETY INSTRUCTIONS

If the cord or plug is damaged, unplug it from the socket with dry hands.
Do not use the lamp until it is repaired by a qualified Electrician.

Instructions document: No. 53-20-031-01



LIGHT SOURCE:

- Socket: E26 base
- Bulb types recommended:



- Recommended light sources: *Halogen light bulb*
 - Recommended wattage: 46 W
 - Max wattage: 46 W

- All fluorescens light bulbs*
 - Recommended wattage: 15 W
 - Max wattage: 15 W

- LED retrofit light bulbs*
 - Recommended wattage: 7 W
 - Max wattage: 9 W

- *Max. light out put for above lamps:*
- *800 Lumens ≈ (60WATT incandescent bulbs)*

- All lamps can be fitted with a dimmer -Please contact your local electrician.

- Lightbulb not included

- *US plug: Type A, 2 PIN, 15 amp, (NEMA 1-15)*
- *US voltage: 120 V*
- *Frequency: 60 Hz*
- *Supply voltage: AC power ~*
- *Normally Closed: IP20*



Class II / Double insulated



Luminaires accepted for mounting on a flammable base



Mark for Canada and the U.S.