

m o o o i<sup>®</sup>



## Smoke Dining Armchair

---

by Maarten Baas

Furniture finished with fire. The beauty and character of burned wood is now captured in a long lasting material, creating the strange sensation of sitting on burnt furniture.

---

<b>Designer</b>	Maarten Baas
<b>Year of design</b>	2004
<b>Material</b>	burnt solid wood, epoxy resin; leather upholstery, naturally fire retardant on fire retardant foam

# m o o o i<sup>®</sup>

## dimensions

60 cm | 23.6"



63 cm | 24.8"

71 cm | 28"



49 cm | 19.5"



106cm | 41.7"

106x60x62cm | 41.7"x23.6"x24.4"

Actual seating height of 47cm | 18.5"

height of armrest 70cm | 27.6" from floor level

## detailing



The enchanting texture of burnt wood. Each item from the Smoke series share the unfamiliar and untamed finish that is characterized by fire. The smoke chair has a repair kit underneath the seat in case of emergencies.

---

## colour



Black

---

## Leather

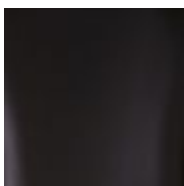
### Composition

Finished cow leather th 08-10 chrome tanning  
Dying trough, finished with water pigment

Leather is a natural product, colours may vary from hide to hide.

### Martindale

50.000



Black

---