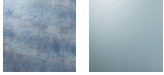
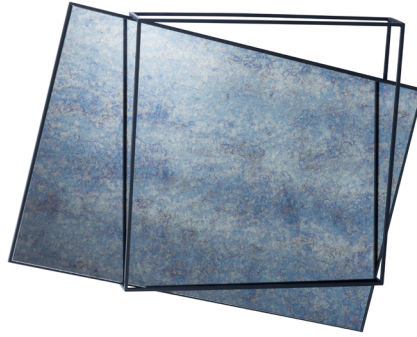


miro on the wall

by Meike Harde
MIRROR



ART. NR

6400AN
6400SI

COLOUR

| MIRROR | FRAME |
|---------|-------|
| antique | black |
| silver | black |

MATERIAL

glass and steel

PROCESS

Each piece is created from glass sheet in a marbled effect or a natural finishing, attached to a black MDF. The frame is constructed in black powder coated steel.

DIMENSIONS mm

FRAME

470L x 70W x 470H

MIRROR

650L x 10W x 450H

