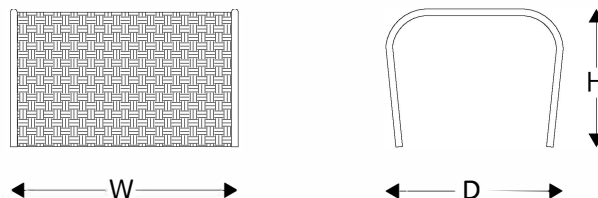


Sugar Loaf Ottoman / Puff Pão de Açúcar

REF #: 3314

Designer: **Manuel Bandeira**
Year: **2016**

Dimensions



W	D	H	Weight
26.75" 68 cm	20" 51 cm	15.25" 39 cm	13 lbs 5.8 kg

Technical Specifications

Indoor and Outdoor usage

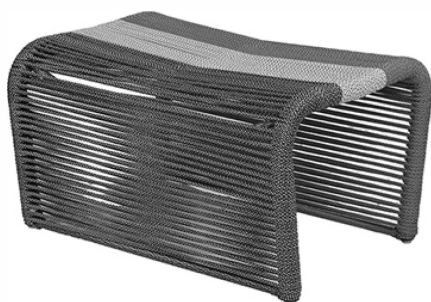
- Frame: Powder Coated Aluminium
- Seat: Woven in Polyester Nautical Rope
- Stacking: not possible

Available Colors

All TIDELLI products are tailor made to order. You can customize it anyway the project.

- Frame: 38 colors available
- Seat: 57 colors available

Visit the website www.tidelli.com/materials to see all the color options



Up to 3 rope color options

Shipping Info

- Units/Box: 01
- Gross Weight: 15lbs / 6.5kgs
- Box Dimensions: 28"x21"x17"H / 71x52x41H cm
- Volume: 6cbf / 0.16m³
- HTS: 9401.80.20.11
- Freight Class: 250



Armchair sold separately.

BRASIL

+55 71 3311-3350

comercial@tidelli.com.br

USA

+1 714 825 0054

sales@tidelli.com

To learn more about TIDELLI, our Collections an Warranty policy, please visit www.tidelli.com

Tidelli
OUTDOOR LIVING