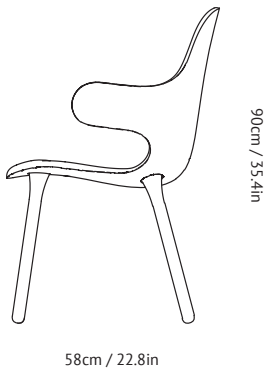




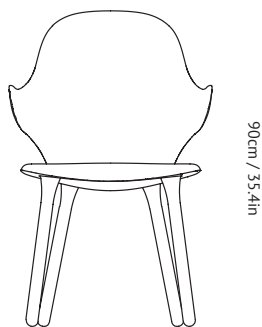
CATCH CHAIR JH1

BY JAIME HAYON
2014

Catch, Jaime Hayon's first contribution to &tradition's collection, is a chair that welcomes you with open arms. Its armrests extend from the shell like literal limbs, ready to embrace you as you sit down. In addition to being a witty personification, it is also an eye-catching piece of design. Serpentine lines give it a playful lightness that is counterbalanced by a sturdy, well-balanced base and legs that ensure maximum comfort. The shell offers comfort alongside great variability. With multiple textile and leather upholstery options available from Kvadrat and CA-MO and two different options for the legs (Wooden legs or swivel base), Catch can be adapted to almost any colour scheme. & in the 1980s, Hayon was interested in skating and graffiti culture, which had an impact on the playful, detailed, colourful and humouristic elements in his design style.



58cm / 22.8in



58cm / 22.8in

Product category	Chair with armrest
Production Process	The Catch chair is made from molded PU foam with CMHR foam on the front for superior comfort. The wooden legs are turned from European solid oak.
Environment	Indoor
Material	Molded PU foam, CMHR foam, oiled or lacquered oak legs, fabric or leather upholstery.
Dimensions (cm/in)	H: 90cm/35.4in, D: 58cm/22.8in, W: 58cm/22.8in, Armrest height: 68cm/26.8in, Seat height: 45cm/17.7in.
Weight (kg)	7.5kg
Base finishes and gliders	The oak legs come with white oiled, smoked oiled or black (RAL 9005) gloss 20) lacquer. The wooden legs are fitted with felt gliders as standard.
COM - Material Consumption	Fabric usage; 1,8 meters based on 140cm roll. Leather usage; 5 square meters. COM must be approved by &tradition to ensure suitability for upholstery.
Strength, Durability and Safety Testing	The Catch chair with wooden legs is tested for strength, durability and safety according to EN 16139 Level 1 - General contract use.
Cleaning Instructions	Please download our Material Cleaning Instructions through www.andtradition.com
Package Dimensions (cm/in)	H: 90cm/35.4in, W: 61cm/24in, D: 61cm/24in.

PRODUCT



FRAME



Smoked oiled oak

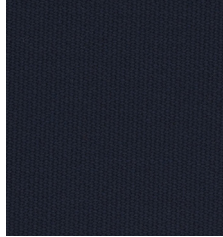
FABRIC



Sunniva 2 236



Smoked oiled oak



Balder 3 792



Black stained oak



Balder 3 192



White oiled oak



Remix 2 123

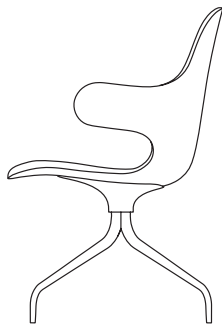


CATCH CHAIR JH2

BY JAIME HAYON

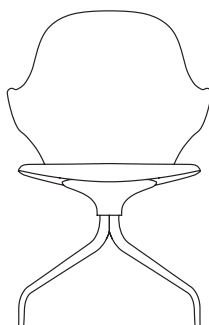
2014

Catch, Jaime Hayon's first contribution to &tradition's collection, is a chair that welcomes you with open arms. Its armrests extend from the shell like literal limbs, ready to embrace you as you sit down. In addition to being a witty personification, it is also an eye-catching piece of design. Serpentine lines give it a playful lightness that is counterbalanced by a sturdy, well-balanced base and legs that ensure maximum comfort. The shell offers comfort alongside great variability. With multiple textile and leather upholstery options available from Kvadrat and CA-MO and two different options for the legs (Wooden legs or swivel base), Catch can be adapted to almost any colour scheme. & in the 1980s, Hayon was interested in skating and graffiti culture, which had an impact on the playful, detailed, colourful and humouristic elements in his design style.



90cm / 35.4in

58cm / 22.8in



90cm / 35.4in

58cm / 22.8in

Product category	Chair with armrest
Production Process	The Catch chair is made from a molded PU foam core covered in soft CMHR foam for superior comfort. The swivel base is made from cast aluminium.
Environment	Indoor
Material	Molded PU foam, CMHR foam, cast aluminium swivel base, fabric or leather upholstery.
Dimensions (cm/in)	H: 90cm/35.4in, D: 58cm/22.8in, W: 58cm/22.8in, Armrest height: 68cm/26.8in, Seat height: 45cm/17.7in.
Weight (kg)	8.5kg
Base finishes and gliders	The swivel base comes in either polished or black (RAL 9005 gloss 20) powder coated aluminium. The swivel base is fitted with plastic gliders suitable for most floor types as standard.
COM - Material Consumption	Fabric usage; 1,8 meters based on 140cm roll. Leather usage; 5 square meters. COM must be approved by &tradition to ensure suitability for upholstery.
Strength, Durability and Safety Testing	The Catch chair with swivel base is tested for strength, durability and safety according to EN 16139 Level 1 - General contract use.
Cleaning Instructions	Please download our Material Cleaning Instructions through www.andtradition.com
Package Dimensions (cm/in)	H: 90cm/35.4in, W: 61cm/24in, D: 61cm/24in.

PRODUCT



FRAME



Black aluminium

FABRIC



XXXXXXXXXX



Black aluminium



XXXXXXXXXX



Polished aluminium



XXXXXXXXXX



Polished aluminium



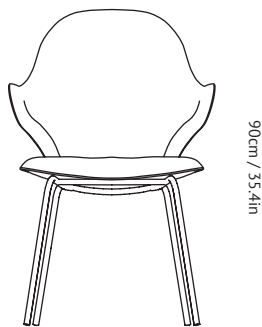
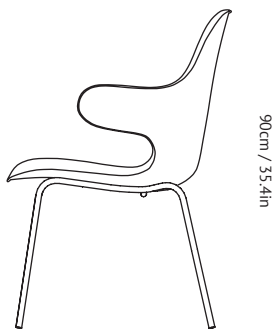
XXXXXXXXXX



CATCH CHAIR JH15

BY JAIME HAYON
2017

Catch, Jaime Hayon's first contribution to &tradition's collection, is a chair that welcomes you with open arms. Its armrests extend from the shell like literal limbs, ready to embrace you as you sit down. In addition to being a witty personification, it is also an eye-catching piece of design. Serpentine lines give it a playful lightness that is counterbalanced by a sturdy, well-balanced base and legs that ensure maximum comfort. The shell offers comfort alongside great variability. With multiple textile and leather upholstery options available from Kvadrat and CA-MO and a matt black frame, Catch can be adapted to almost any colour scheme. In the 1980s, Hayon was interested in skating and graffiti culture, which had an impact on the playful, detailed, colourful and humouristic elements in his design style.



58cm / 22.8in

Product category	Chair with armrest
Production Process	The Catch chair is made from molded PU foam with CMHR foam on the front for superior comfort. The metal base is made from Ø16mm steel tubes.
Environment	Indoor
Material	Molded PU foam, CMHR foam, steel base, fabric or leather upholstery.
Dimensions (cm/in)	H: 90cm/35.4in, D: 58cm/22.8in, W: 58cm/22.8in. Armrest height: 68cm/26.8in. Seat height: 45cm/17.7in.
Weight (kg)	7.5kg
Base finishes and gliders	Matt black powder coating (RAL 9005). The tube base is fitted with plastic gliders suitable for most floor types as standard. Felt gliders available upon request.
COM - Material Consumption	Fabric usage; 1,8 meters based on 140cm roll. Leather usage; 5 square meters. COM must be approved by &tradition to ensure suitability for upholstery.
Strength, Durability and Safety Testing	The Catch chair with tube base is tested for strength, durability and safety according to EN 16139 Level 1 - General contract use.
Cleaning Instructions	Please download our Material Care & Cleaning Instructions through www.andtradition.com
Package Dimensions (cm/in)	H: 90cm/35.4in, W: 61cm/24in, D: 61cm/24in.

PRODUCT



FRAME



Steel

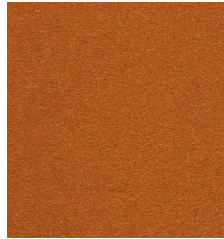
FABRIC



Divina 3 944



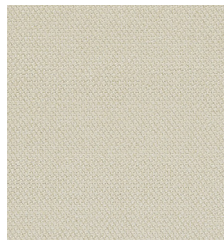
Steel



Divina 3 552



Steel



Steelcut 2 240