



## MAYOR SOFA AJ5

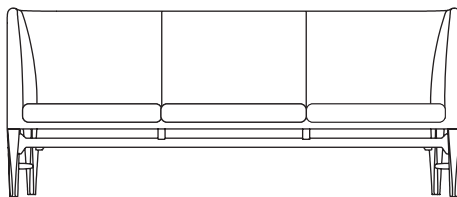
BY ARNE JACOBSEN & FLEMMING LASSEN  
1939

# MAYOR SOFA AJ5

BY ARNE JACOBSEN & FLEMMING LASSEN  
1939

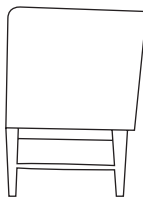


The Mayor sofa shows a moderation of modernism and a unique regional adaptation: the frame is made of solid oak, the upholstery is tight but with three loose cushions that comprise the seating area, and there is generally a more human approach to modernism with a focus on livability. The sofa is made of high quality materials. The tight upholstery and the two rows of elegant buttons that extend over the armrests and back give the sofa a simple and stylish look. Thus the sofa fits perfectly into both modern homes and workplaces, where quality and design are important parameters.



82cm / 32.3in

200cm / 78.7in  
Seat height: 44cm / 17.3in



82cm / 32.3in

62cm / 24.4in

## Product category

Sofa

## Production Process

The Mayor sofa is hand built by skilled craftsmen. The base of the sofa is made of solid oak and a true statement of handcraft and traditional woodworks. The frame is build of solid beech with elastic belts and CMHR foam. Upholstery available in fabric or leather.

## Environment

Indoor

## Material

Solid oak base (white oiled oak, smoked oiled oak or black stained oak), internal solid wood frame, elastic belts, CMHR foam, fabric or leather upholstery.

## Dimensions (cm/in)

H: 82cm/32.3in, D: 62cm/24.4in, L: 200cm/78.7in.  
Seating height: 44cm/17.3in.

## Weight (kg)

45kg

## Colours

The wooden base comes in: White oiled oak, Smoked oiled oak, Black stained oak (RAL 9005)

## In-stock version

Hallingdal 65 130 with white oiled oak base

## COM - Material Consumption

Fabric usage; 6.5 meters based on 140cm roll.  
Leather usage; 11 square meters. COM must be approved by &tradition to ensure suitability for upholstery.

## Strength, Durability and Safety Testing

The Mayor sofa is tested for strength, durability and safety according to EN 15373 Level 2 - General contract use.

## Cleaning Instructions

Please download our Material Cleaning Instructions through [www.andtradition.com](http://www.andtradition.com)

## Package Dimensions (cm/in)

H: 205cm/80.7in, W: 85.5cm/33.7in, D: 65cm/25.6in.

**PRODUCT**



**FRAME**



**White oiled oak**

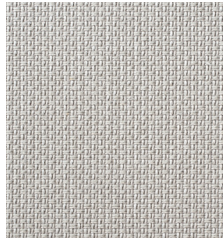
**FABRIC**



**Divina 3 346**



**Smoked oiled oak**



**Jacquard 5**



**Black stained oak  
(RAL 9005)**



**Hallingdal 65 224**



**PRESS RELEASE**  
**MAYOR** AJ6

1939

# &TRADITION

LAUNCHES

## MAYOR AJ6

A NEW EDITION OF MAYOR  
BY ARNE JACOBSEN & FLEMMING LASSEN

IN RESPONSE TO THE SUCCESSFUL RELAUNCH OF  
ARNE JACOBSEN & FLEMMING LASSEN'S MAYOR, &TRADITION NOW  
LAUNCHES A 2-SEATER VERSION OF THE ICONIC SOFA.

1939

Out of respect for the original design, the new addition emphasizes the classic and iconic shape. With its modest dimensions of just 138 cm in length, the sofa fits perfectly into smaller homes and spaces – meeting a growing trend of small living.

The frame is made from solid oak and is hand-built by skilled craftsmen, which makes the sofa a true statement of handcraft and traditional woodworks.

The Mayor was initially introduced in 1939 in conjunction with Søllerød City Hall, also designed by Arne Jacobsen and Flemming Lassen. Being responsible for the entire city hall's aesthetic appearance, from the design of the entire building to furniture and small details such as door handles, Jacobsen & Lassen also designed a wedding room with accompanying furniture - including a sofa for the waiting area. Exploiting the symbolism of a ritual act, they created a universal design that shows a moderation of modernism and a unique regional adaptation.

Arne Jacobsen & Flemming Lassen are both highly regarded architects and designers who contributed significantly to the Danish Modernism movement. After setting up office together in the early 1930's, their breakthrough came in their award-winning "House of the Future". A spiral-shaped home replete with a helicopter pad, conveyor tube for the mail and a kitchen stocked with ready-made meals, unheard of at the time. They went on to design numerous other projects together and individually, which brought them international acclaim and high demand at auctions today. Both Jacobsen and Lassen are known for their simple, iconic, streamlined designs rooted in the Functionalism school of thought, and as key frontrunners defining Danish Modernism.

&tradition is a Danish design company established in 2010 with the founding principle being tradition tied to innovation. Our unique portfolio of furniture and lighting spans from the 1930s to the present day and includes designs by internationally renowned designers.



<b>Product category</b>	Sofa
<b>Production Process</b>	The Mayor sofa is hand built by skilled craftsmen. The base of the sofa is made from solid oak and a true statement of handcraft and traditional woodworks. The upholstery is built around a frame of solid wood and is upholstered in CMHR foam and fabric or leather.
<b>Environment</b>	Indoor
<b>Materials</b>	Solid oak base (White oiled oak, Smoked oiled oak or Black stained oak), internal solid wood frame, CMHR foam, Kvadrat fabric or CA-MO leather upholstery. All foam, fibers and textiles used (excluding upholstery fabric or leather) comply with the fire standards relevant for contract sales & contract use in the UK.
<b>Dimensions (cm/in)</b>	H: 82cm/32.3in, D: 62cm/24.4in, L: 138cm/54.2in, Seating height: 40cm/15.7in
<b>Colours</b>	The wooden base comes in White oiled oak, Smoked oiled oak and Black stained oak.
<b>Design year</b>	1939
<b>Press info</b>	andtradition.com For image downloads go to andtradition.com / downloads For press releases go to andtradition.com / press For price requests please contact press@andtradition.com
<b>Please contact for more information</b>	PR & Communication Manager Sasha Bakholt sba@andtradition.com T: +45 6020 1313

**PRODUCT**

AJ6



**LEG**



**White oiled oak**



**Smoked oiled oak**



**Black stained oak**